



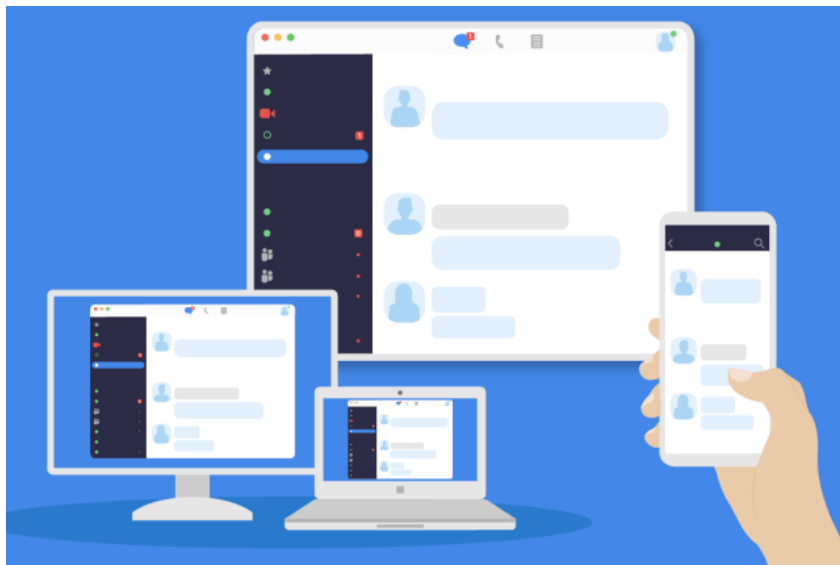
Clearwater Lake

Property Owners Association

2020 Summer Newsletter

Save the date:

Saturday, August 1, 2020: 9 AM – 10:30 AM; Annual CLPO Meeting – Virtual Meeting



A word from our president... Virtual Annual Meeting and Change in the Board Election Process

We have changed our Annual Meeting to a virtual online meeting to be held on Saturday, August 1st at 9:00-10:30 AM CDT. In our Spring Newsletter we indicated that we would combine the Annual Meeting with the Annual Picnic, but alas, we find we need to change to a virtual meeting and **cancel the 2020 Picnic.**

In a few weeks we will provide online access information for the virtual Annual Meeting to all on our emailing list where we have a valid email address, so please ensure that our information is correct. If you're not sure we have your preferred email address just send us an email to contact@clpo.org with any additions or corrections.

The virtual Annual Meeting agenda includes the election of Board members but we're going to do things a little differently this year. All current members are eligible to serve on the Board. (A "current member" is one who has paid dues in 2020.) There are no specific talents or capabilities, just an interest in serving the lake

community with a few hours of your time. You don't need to be a lake expert, a water expert, a fish expert, or any other kind of expert, just someone who is interested in helping the community. If you are interested send us a note by Wednesday, July 22nd (10 days before the Annual Meeting per the Bylaws) with a short paragraph of interest describing yourself. You can email us at contact@clpo.org or mail us your nomination to:

CLPO
PO Box 476
Annandale, MN 55302

At the Annual Meeting we will present the slate of candidates and read their statements of interest.

The following week of August 3rd we will send out paper ballots to all current members, regardless of whether they attended the virtual Annual Meeting, with self-addressed, stamped envelopes with a return postmark deadline of Saturday, August 22nd. Results will be announced on our website (www.clpo.org) and in the Fall Newsletter.

CLPO Membership and the difference between the CLPO and the CRWD

There has been confusion between the two organizations - the Clearwater Lake Property Owners Association (CLPO, that's 'us') and the Clearwater River Watershed District (CRWD). These are two different organizations. The CLPO is supported by our members (you) and our sponsors, while the CRWD is supported through property taxes. Some believe that paying property taxes makes one a member of CLPO, which is not correct. The add-on to your property taxes is actually paying for services provided by the CRWD (www.crwd.org).

Through volunteer work the CLPO manages some of the CRWD projects that affect Clearwater Lake such as the long-running Eurasian Watermilfoil (EWM) control project. The EWM work is paid for by the CRWD (from your tax dollars) but the CLPO manages the project. We (volunteers) do the research, we interface with the DNR, we research and hire the experts to survey the lake, and then we send out bids and hire the application company to apply the treatment. The CLPO also manages and pays for other projects separate from the CRWD such as the sandbar treatment for swimmer's itch.

If you wish to join the CLPO or if you wish to renew your membership go to www.clpo.org and click on "Join Today" at the top of the page. If this is a renewal you will find a link on that next page. Payment may be made via PayPal or by check. You do not need a PayPal account to use that service. If you have difficulties send us an email at contact@clpo.org.

Lake News

Despite the pandemic work on the lake continues this year unabated. We conducted a delineation for Curly-leaf Pondweed in May, followed by securing a DNR permit and then treating specific areas. Unlike EWM, effective CLP treatment is done over a period of a few years. While we already see a reduction in CLP, due to the nature of the plant and its growing cycles treatment will continue next year and so on.

In late June we will conduct a point-intercept survey of the littoral areas of the lake (the growing areas typically less than 20 feet deep) to determine the overall plant outlook. This gives us a current snapshot of conditions in the lake and we can compare that with previous surveys to determine any trends.

We also plan to conduct a delineation for EWM in July or so followed by a DNR permit application and another expected treatment cycle. You may recall that for the first time in over two decades we did not treat for EWM last year because both the DNR and our hired third-party experts could not find enough EWM to justify putting chemicals in the lake. We don't know whether this was a one-year blip or whether our long-term efforts are paying off, but we'll know that over time.

Finally, we continue to focus on the ramp areas where the most likely introduction of AIS into the lake could occur. We are again having Blue Water Science conduct four or so dives near all the popular ramps to search for Starry Stonewort (SSw) and other invasives. We also have our small army of rakers: member volunteers like you who every couple of weeks go to the ramps, toss in double-headed rakes, and see what comes up.

Suspect samples are taken to the DNR for analysis. So far, we have not found any SSw. A big thank you goes out to all our rakers, you are an important part of our 'early warning radar system!'

Through your tax dollars the CRWD conducts water quality testing of all lakes in the District. Go to the home page at www.crw.org and click on "2019 Water Quality Monitoring Lake Report Cards" to reach the PDF. There you will find in alphabetical order the test results of all lakes in the CRWD's region. Clearwater has seen tremendous improvements over the years through our efforts – the pollutants are down, the lake vegetation is being managed, and the water clarity is up.

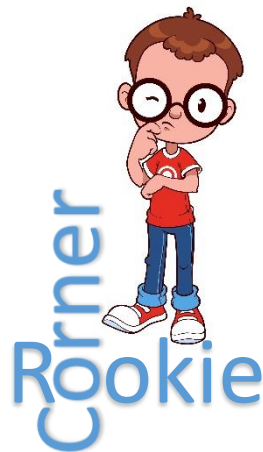
Enjoy the rest of the summer and we hope to 'see' you at the virtual Annual Meeting!

And remember: **Clean, Drain, Dry!**



Jim Kutzner

Rookie Corner: by Paul Pattee, CLPO Board Member



Hello & welcome back to the "Rookie Corner". Last time, we presented the water conservation plan for our state which included the creation of topographical watershed districts by the DNR supported by lake associations, like our own CLPO, for conservation enterprises. In this article, I had planned to introduce information on COLAs (Coalition of Lake Associations) but decided instead to keep the COLA topic "on-ice" and speak about the Clearwater River Watershed District (CRWD). After all, without the governance and financial support of the DNR & the CRWD, the CLPO and its plan for AIS management would be a sandbar-marooned pontoon on unretractable Sea-Legs. Ouch . . . painful thought!! So, what is the CRWD?

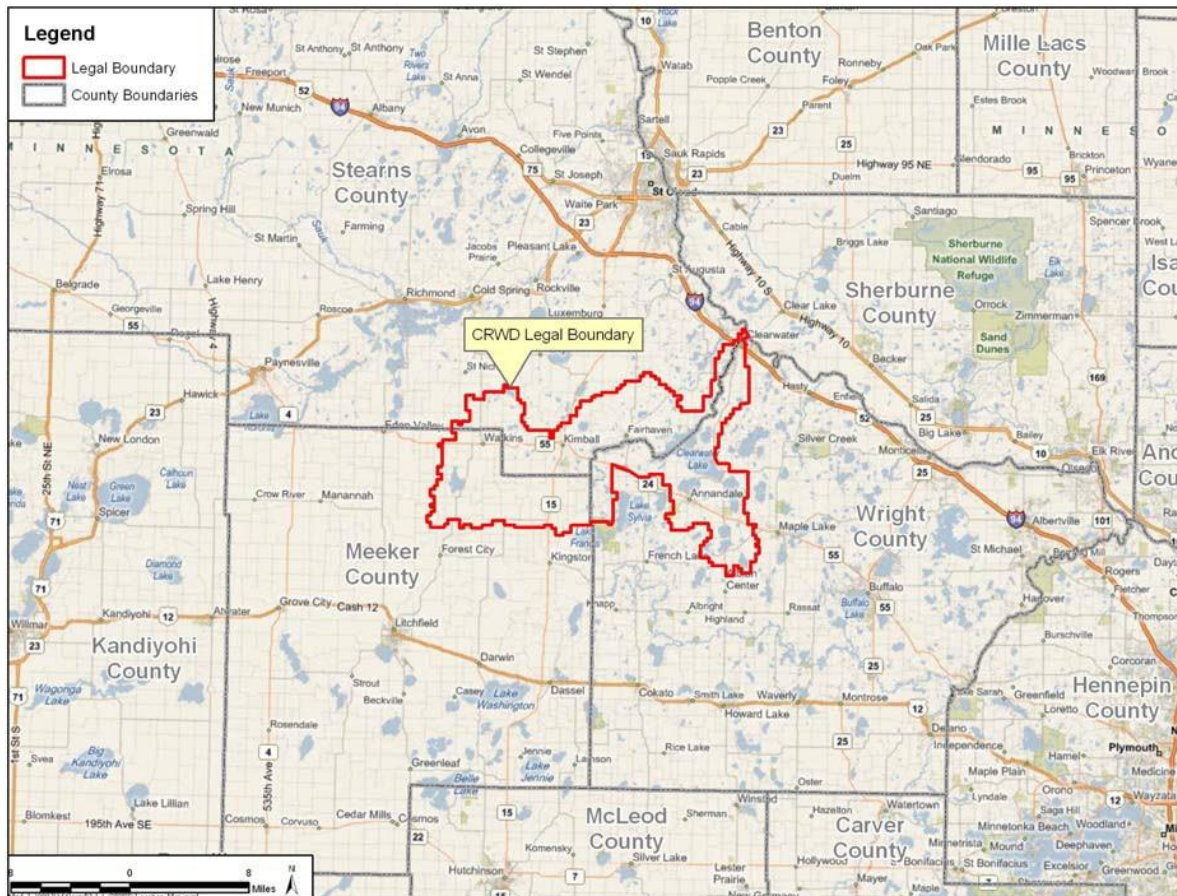
Taken directly from the Clearwater River Watershed District website at www.crw.org, it "was established as a unit of local government on April 9, 1975, by order of the Minnesota Water Resources Board, acting under authority of Chapter 112, MSA (the Minnesota Watershed Act). Though the original thrust of the CRWD and its five-member Board of Managers was the improvement of water quality in the Clearwater River Chain of Lakes, its scope has grown into a complete program of water management within its boundaries". So, what was happening requiring the formation of such an empowering governance back then?

In the 1960s and early 1970s, people noticed a decline in water quality of the Clearwater Chain of Lakes including reduced clarity and growth of surface algae. The fish population began to change favoring "rough fish" such as bullheads and carp. Studies at the time, demanded by concerned citizens, indicated an alarming rate of pollution

entering the waters from cities, farmland, private property, and industry. High concentrations of phosphorus were discovered coming from *point sources* in the cities of Watkins, Kimball, Annandale, and the Modern Craftsmen's Milk Association of Watkins by discharged sewage and industrial effluents into Warner Creek & the Clearwater River. Other *non-point sources* of phosphorous included septic tanks, agricultural waste, and storm water runoff. Once identified, it was decided that only a watershed district, with governance powers of enforcement, assessment, and access to federal and state funding, could tackle the Chain of Lakes pollution problem. With that, the Clearwater River Watershed District (CRWD) was formed.

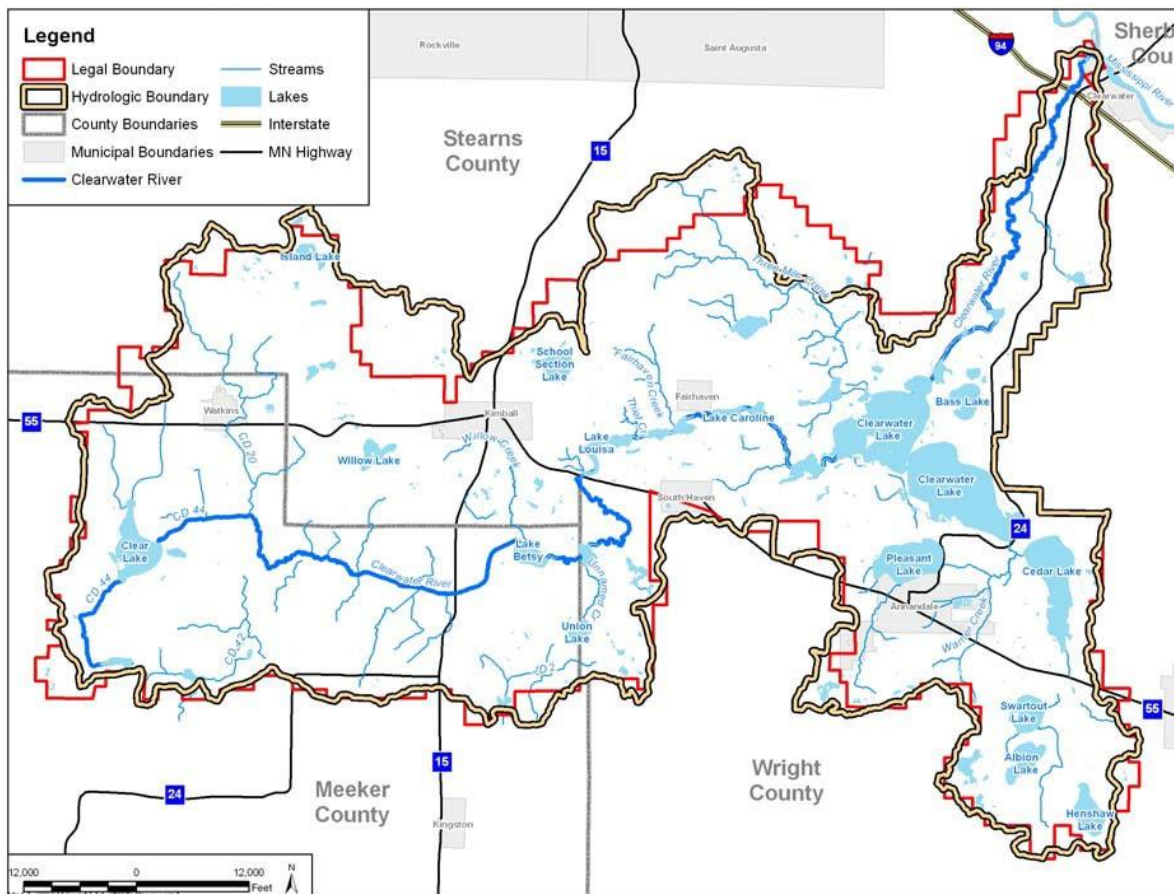
By description, from the CRWD website . . . "The Clearwater River Watershed District encompasses the entire drainage area of the Clearwater River. It is 158.8 square miles, with 46.1 square miles in Meeker County, 54.2 square miles in Stearns County, and 58.5 square miles in Wright County. The District extends approximately 22.5 miles from east to west and 16.5 miles from north to south. Municipalities included (all or part) within the District are Annandale, Clearwater, Kimball, South Haven, and Watkins, as well as the Village of Fairhaven. Townships located totally or in part within the CRWD are: Albion, Clearwater, Corinna, Fair Haven, Forest City, Forest Prairie, French Lake, Kingston, Luxemburg, Lynden, Maine Prairie and Southside".

CRWD Location



Continuing . . . "The lakes through which the Clearwater River flows are divided into an Upper and Lower Chain by the Fairhaven dam. The Upper Chain includes Lakes Betsy, Scott, Louisa, and Marie (which includes the Mill Pond). The Lower Chain includes Lakes Caroline, Augusta, Clearwater, Grass, and Wiegand. Other major lakes in the District are: Albion Lake, Bass Lake, Cedar Lake, Clear Lake, Henshaw Lake, Little Mud Lake, Otter Lake, Pleasant Lake, School Section Lake, Swartout Lake, Union Lake, Willow Lake. Non-major lakes are: Edwards Lake, Island Lake, Laura Lake, Rohrbeck Lake and Round Lake". News to me was that Lake Sylvia is not in the watershed district which makes sense since it is not contiguous with the Clearwater River.

CRWD Lakes



Worth noting, though unrelated to the activities of the CRWD, was the limit put on phosphorus use by individual property owners. Minnesota's Phosphorus Lawn Fertilizer Law was enacted to reduce over-enrichment of rivers, lakes, and wetlands with the nutrient phosphorus. The law was enacted over a period of years starting in 2002 with a restriction on the use of phosphorus containing lawn fertilizer in the seven-county Twin Cities metro area in 2004 and by Minnesota's other 80 counties in 2005. Minnesota was the first state in the nation to regulate phosphorus containing lawn fertilizers.

I mentioned earlier, the CPLO's conservation enterprises combating AIS in preserving & enhancing our pristine waters. This summer, we had reporting obligations to both the CRWD and Wright County to qualify for grant money in our AIS surveillance & treatment programs including:

- Blue Water Science inspections for Starry Stonewort (SS) at four different lake landing sites, three times in 2020.
- Delineation (e.g. lake mapping) for the presence of Eurasian Water Milfoil (EWM) and Curly Leaf Pond Weed (CLP) necessary in applying for DNR treatment permits.
- The treatment of CLP by Lake Restoration at three sites in the Clearwater Lake, east basin, in May 2020.
- Treatment of EWM by Lake Restoration in July depending on the 2020 delineation report in support of a DNR permit for treatment.
- Ramp inspections in 2020.

Worth noting, in 2019, through the efforts of the CLPO, there was *not* enough EWM to justify a DNR permit for treatment, but surveillance and control are ongoing.

None of this works without the financial support from a variety of sources including the Clearwater River Watershed District & you, our members. The cost for treatment of CLP on Clearwater Lake in 2020 was \$10,650, with \$4350 coming from state grant money, and the final cost of \$6,300, plus the cost of delineation, coming from your tax dollars paid to the CRWD.

We're the folks who 'get it done.' The Clearwater Lake Property Owners association, through your membership participation, is every bit as important as the CRWD and the state grant funding. If you would like to be a part of this effort, consider a donation or become a CLPO member by using the links <https://clpo.org/donate/> or <https://clpo.org/members/join.asp>.

Until next time . . . hope to see you on the lake!



Social Media:

Facebook: @ClearwaterLakePropertyOwnersAssociation
Twitter: @lake_clearwater
Instagram: CLPOA

CLPO Board:

Officers: President: Jim Kutzner contact@clpo.org
Vice Pres: Mark Bertelsen mbertelsen34@gmail.com
Secretary: Joy Carlson joycarlson@remax.net
Treasurer: Jeff Golden treasurer@clpo.org

Board Members: Dean Flygare, Tim Isle, Mark Wilkins, Westin & Wendy Nelson,
Liz Leitch-Sell & Paul Pattee

AIS Committee: t_ilse@yahoo.com
Membership Committee: markclpo@comcast.net
Communication Committee: clpomn@gmail.com

**** Don't forget to Join or Renew your membership - Thank you! ****

2020 CLPO Member Form

Please encourage your neighbors to do the same and join. We have made a big difference in the lake quality in the past 15 years and will be able to continue in the years to come if we get your support. Thank you!

2020 CLPO Annual Membership Dues Payment: **\$50.00**

Yes, I'd like to give an additional donation: \$_____

Total: \$_____

Check the box if you'd like to have the additional donation kept anonymous:

Check the box if your information has changed and needs to be updated: |

Name: _____

Mailing Address: _____

Lake Address: _____

Email Addresses: _____

Phone Number(s): _____

Please include this form if paying by check and make checks payable to: CLPO

Online dues payment is available at www.dpo.org

Cut below, send this top portion with your payment and keep the bottom portion for your records

✂-----

2020 CLPO Dues Payment: **\$50.00**

Additional Donation: \$_____

Total: \$_____

** CLPO is a 501(c)(3) Organization. All dues and donations are tax-deductible. **



Clearwater Lake
Property Owners Association

PO Box 476
Annandale, MN 55302

**** IMPORTANT ANNUAL MEETING & BOARD ELECTION INFO ENCLOSED ****



CLPO
 P.O. Box 476
 Annandale, MN 55302

Current - Paid for 2020:

