



Bed of Starry Stonewort in Clearwater Lake, Wright County, Minnesota, on August 21, 2023

---

# Starry Stonewort Discovery in Clearwater Lake, Wright County, Minnesota, 2023

---

August 21, 2023: Starry Stonewort Discovered

Prepared for:  
Clearwater Lake Property  
Owners Association



Prepared by:  
Steve McComas  
Jo Stuckert  
Connor McComas  
Blue Water Science  
St. Paul, MN 55116

August 22, 2023

# **Starry Stonewort Discovery in Clearwater Lake, Wright County, Minnesota, 2023**

## ***Findings***

Clearwater Lake (MnDNR ID: 86-025200) is a 3,187 acre lake located in Wright County, Minnesota.

**SSW Discovery on August 21, 2023:** During a point intercept survey on Clearwater Lake, SSW was found in a protected cove in the south side of the east basin.

Edges of the starry stonewort mat were determined with GPS. A total of 94 sites were sampled and were combined with visual observations to delineate the SSW. Scattered beds of SSW were estimated to cover at least 3,100 square feet with one large mat having a bed thickness up to 2 feet at about 1,500 square feet. A number of smaller beds were scattered in the area as well. SSW was found in 3 to 5 feet of water (Figure 1). A tentative treatment area is estimated at 1.8 acres.

**Recommendations:** Because this is a new infestation, aggressive control is recommended for the first year. An algaecide treatment followed up with an assessment and a possible second treatment should be considered in 2023.

# Clearwater Starry Stonewort Observation August 21, 2023

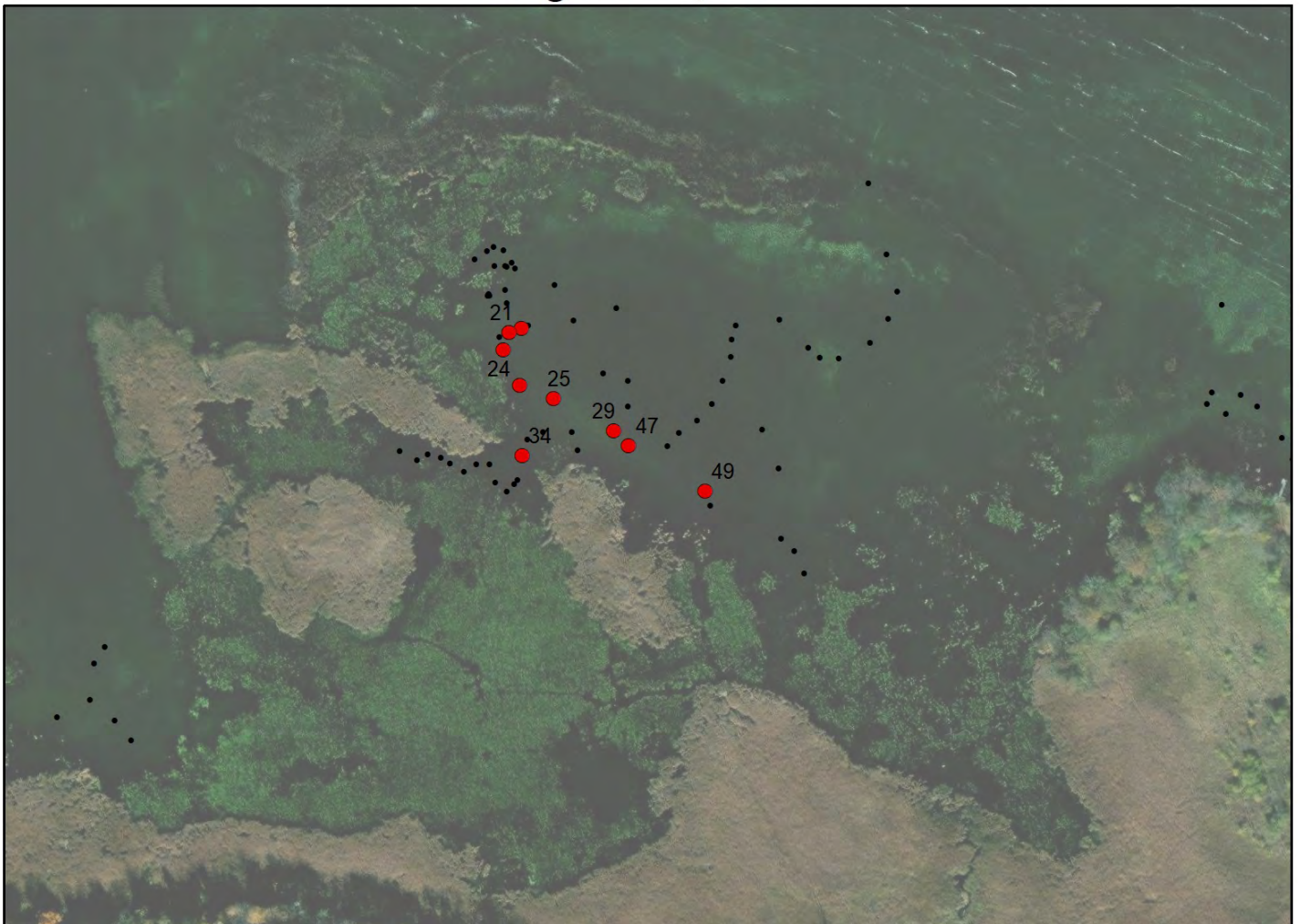
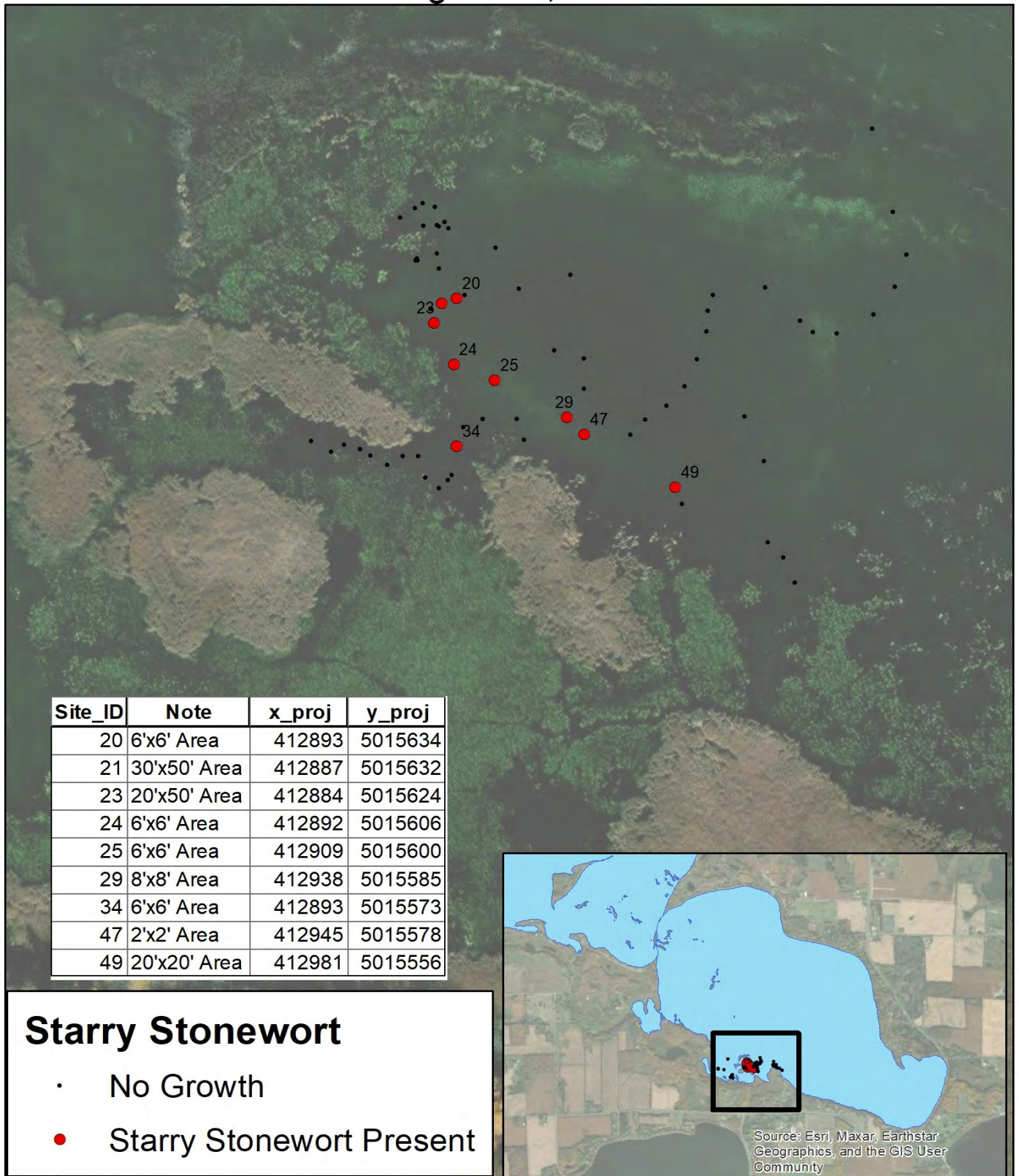


Figure 1. Locations of SSW sampled in Clearwater Lake on August 21, 2023.



# Clearwater Starry Stonewort Observation August 21, 2023



Data Collected August 21, 2023  
Clearwater Lake ID: 86025200



UTM NAD 1983  
Blue Water Science



## SSW Conditions on August 21, 2023



**Figure 2. [top-left] SSW appears to be confined in a sheltered bay bordered by cattails and bulrush. [top-right] The beds of SSW are undisturbed and range in area from 4 sq ft to an estimated 1,500 sq ft. [bottom-left] SSW sample with a star bulbil. [bottom-right] A number of bulbils were observed in the SSW beds.**